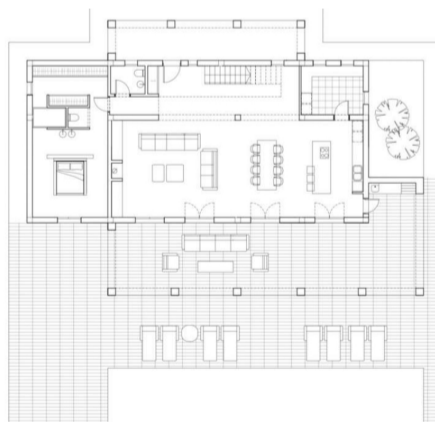
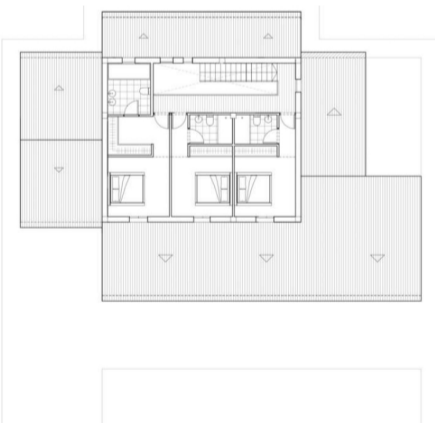


Superficie	Construible	Edificabilidad	Ocupación
Puerto Bajo			
Vivienda	168.35 m ²	168.35 m ²	168.35 m ²
Paseo 1	25.84 m ²	25.84 m ²	25.84 m ²
Paseo 2	77.57 m ²	77.57 m ²	77.57 m ²
Puerto Alto			
Vivienda	97.00 m ²	97.00 m ²	-----
Total		366.26 m ²	369.24 m ²
			99.27% (100%)



Superficies	Construidas	Reforestadas	Ocupación
Parque Sapo			
Vivero 1	148.35 m ²	148.35 m ²	148.35 m ²
Piche 1	23.84 m ²	23.84 m ²	23.84 m ²
Piche 2	77.07 m ²	77.07 m ²	77.07 m ²
Parque Aña			
Vivero 1	97.00 m ²	97.00 m ²	—
Total		366.26 m ²	269.24 m ²

mae:270 F3



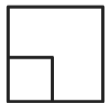
€1,695,000

This stunning Rustic Villa project combines traditional charm with modern comfort, offering a luxurious lifestyle in a peaceful setting.

As you enter this villa, you'll find a spacious and inviting open-plan living and dining area, perfect for family gatherings and entertaining friends...



460 m²



1354



4



4